

# **POLYESTER STAPLE FIBER – SECTOR OVERVIEW**

**February 2019**

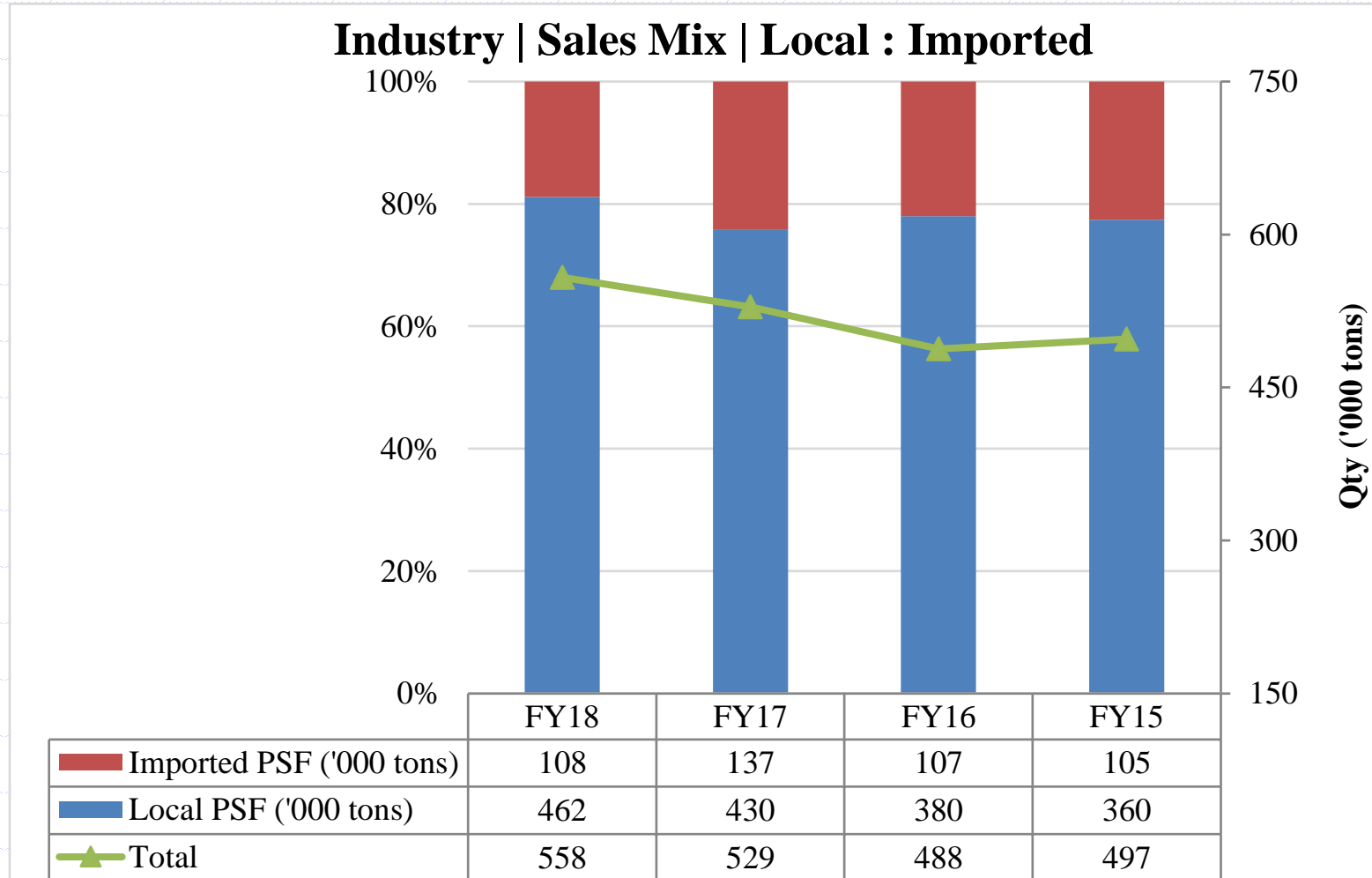
# Polyester Fibre

- ◆ Industry Snapshot
- ◆ Industry Performance Trend
- ◆ Performance Trends
- ◆ Price Trends
- ◆ Regulatory Duty Structure
- ◆ Recycled Polyester Fibre

# Industry | Performance | Sales Mix

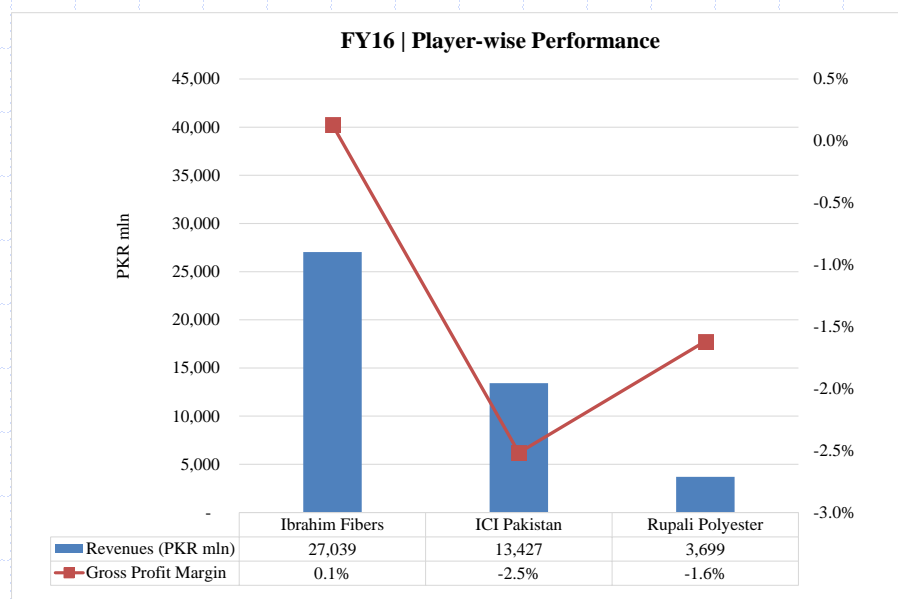
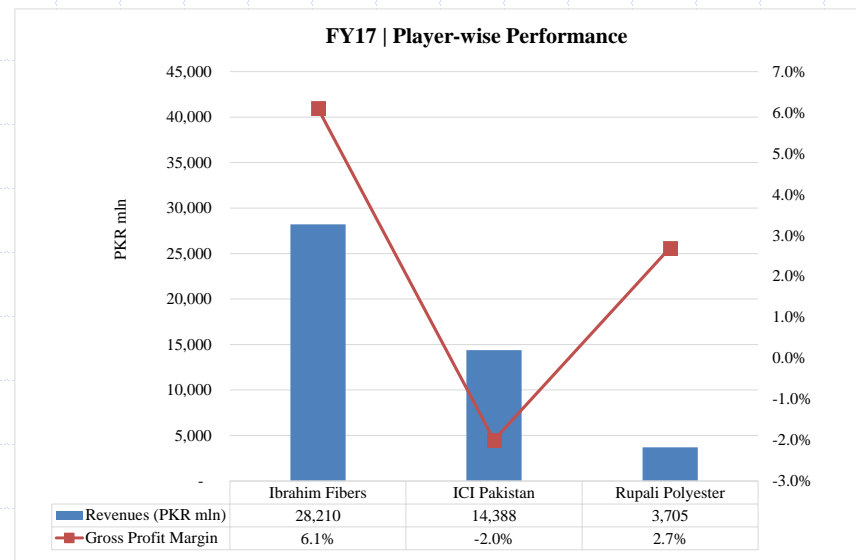
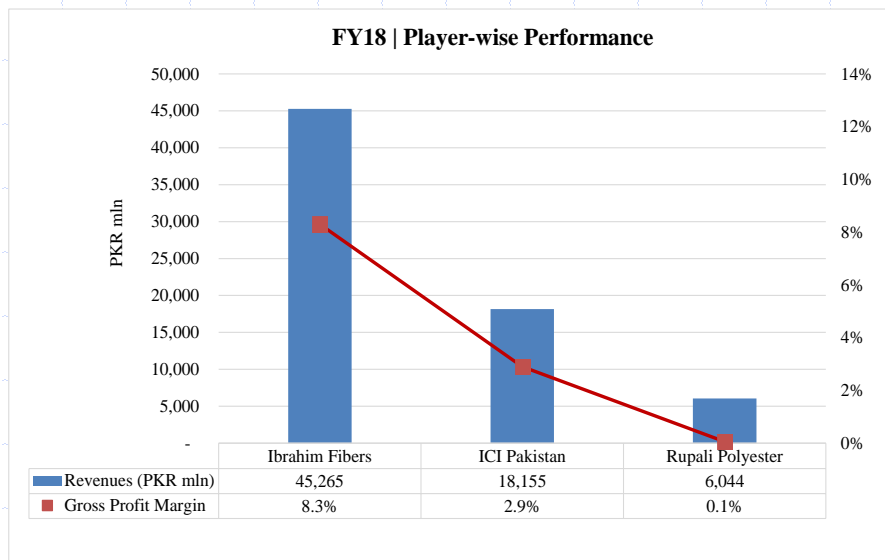
FY18							
Sr. #	Companies	Installed Capacity (tpa)	Operational Capacity (tpa)	Market Share (Operational Capacity)	Production (tpa)	Capacity Utilization	Market Share (Production)
1	Ibrahim Fibers Limited	390,600	390,600	72%	326,269	84%	69%
2	Dewan Salman Fibers Limited	240,000	-	-	-	-	-
3	ICI Pakistan Limited	126,853	126,853	24%	126,853	100%	27%
4	Rupali Polyester Limited	23,725	23,725	4%	20,843	88%	4%
<b>Total</b>		<b>781,178</b>	<b>541,178</b>	<b>100%</b>	<b>473,965</b>	<b>88%</b>	<b>100%</b>
FY17							
Sr. #	Companies	Installed Capacity (tpa)	Operational Capacity (tpa)	Market Share (Operational Capacity)	Production (tpa)	Capacity Utilization	Market Share (Production)
1	Ibrahim Fibers Limited	390,600	390,600	73%	290,697	74%	67%
2	Dewan Salman Fibers Limited	240,000	-	-	-	-	-
3	ICI Pakistan Limited	122,250	122,250	23%	121,929	100%	28%
4	Rupali Polyester Limited	23,973	23,973	4%	23,387	98%	5%
<b>Total</b>		<b>776,823</b>	<b>536,823</b>	<b>100%</b>	<b>436,013</b>	<b>81%</b>	<b>100%</b>
FY16							
Sr. #	Companies	Installed Capacity (tpa)	Operational Capacity (tpa)	Market Share (Operational Capacity)	Production (tpa)	Capacity Utilization	Market Share (Production)
1	Ibrahim Fibers Limited	390,600	390,600	73%	251,307	64%	58%
2	Dewan Salman Fibers Limited	240,000	-	-	-	-	-
3	ICI Pakistan Limited	122,250	122,250	23%	118,859	97%	27%
4	Rupali Polyester Limited	23,973	23,973	4%	24,171	101%	6%
<b>Total</b>		<b>776,823</b>	<b>536,823</b>	<b>100%</b>	<b>394,337</b>	<b>73%</b>	<b>100%</b>

# Industry | Performance Trend



- Anti Dumping duties helped the local industry
- Capacity utilization improved of local players

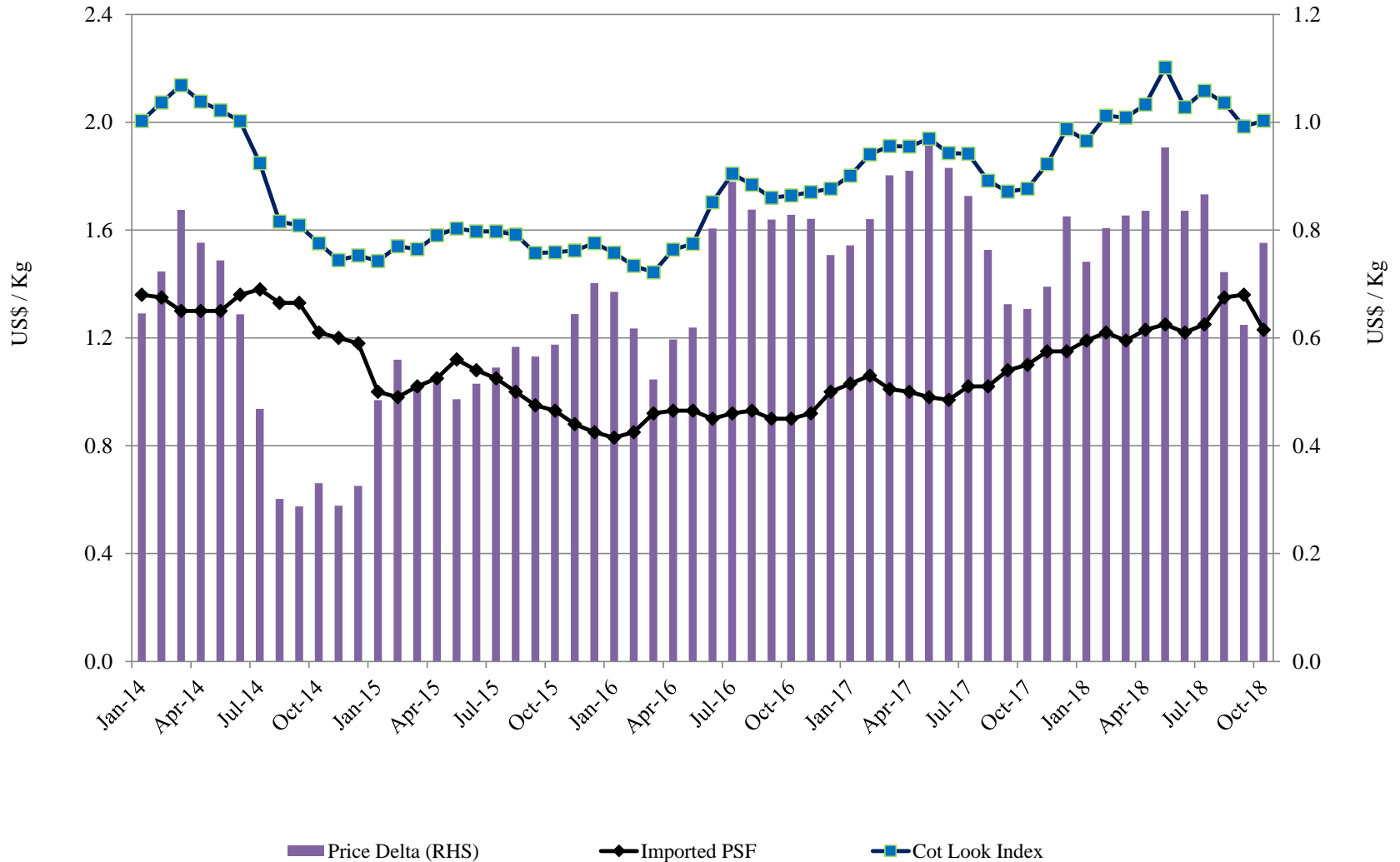
# Player-wise | Performance Trend



- Revenues represent respective entities Polyester segment sales.
- Margins are proportioned as per polyester segment contribution to topline where segment data is not disclosed.

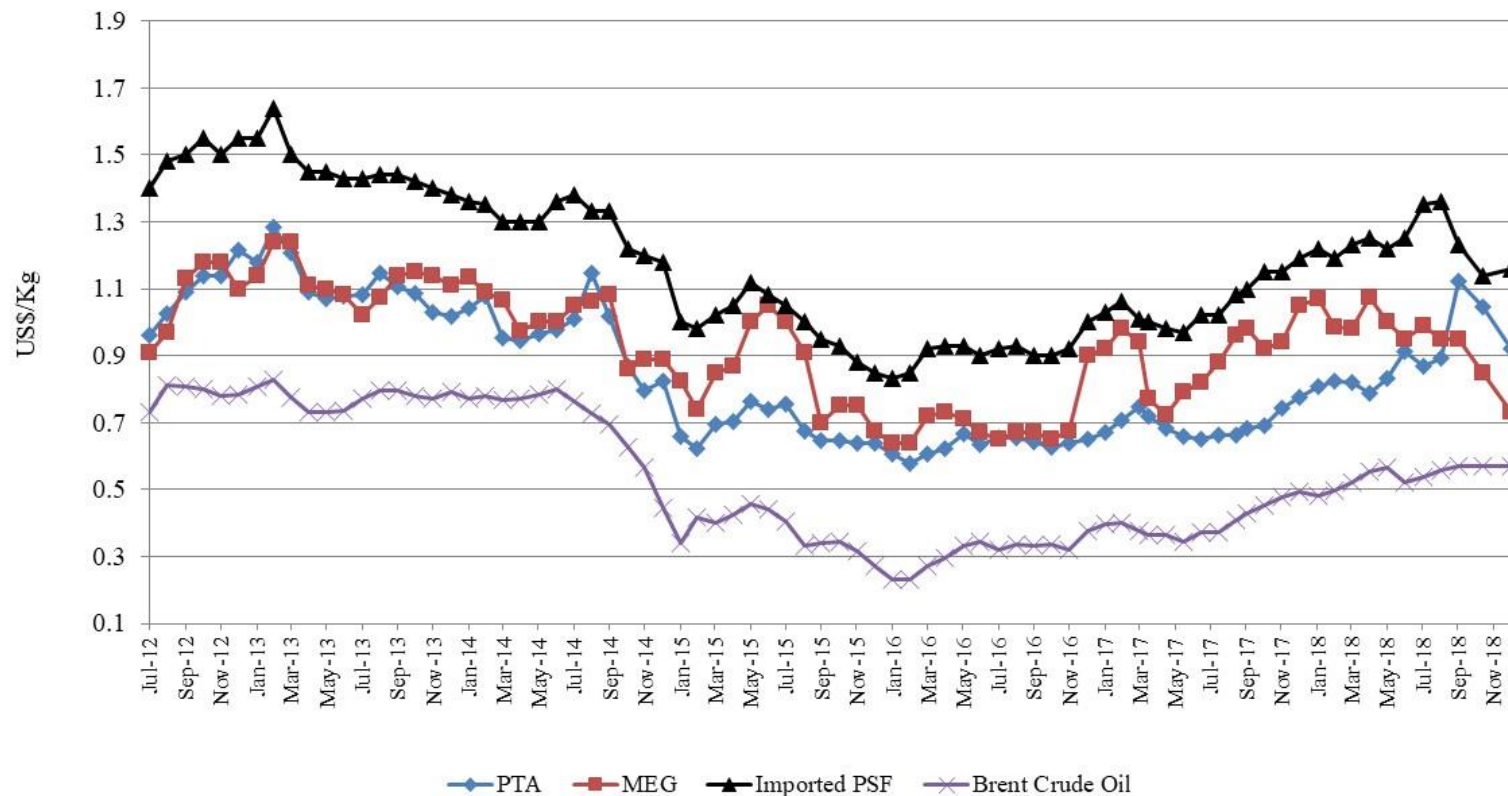
# Price Trend | PSF & Cotton

## Price Trend | PSF and Cotton



# Price Trend | Input Vs. Output

## Price Trend | PTA, MEG, Brent Oil and PSF



- PSF prices follow crude oil price trend. Volatility in prices are directly reflecte in the prices of PSF and its raw materials i.e. PTA & MEG

# Industry | Regulatory Duty Structure

- **Anti-Dumping Duty**

- ✓ **FY16: Oct. 3, 2015 to Oct. 3, 2020 | 2.8-11.5%**
- ✓ **FY13: Dec.21, 2012 to Apr. 20, 2013 | 2.95-8.82%**

- **Custom Duty**

	<b>Products</b>	<b>FY18</b>	<b>FY17</b>	<b>FY16</b>	<b>FY15</b>
Raw Material	PTA	16%	16%	15%	15.0%
	MEG	3%	3%	2%	1%
Finished Good	PSF	7%	11%	10%	10.0%



## Recycled Polyester Staple Fibre

Recycled Polyester staple Fiber is prominent segment in recycling PET and it has been projected that the Recycled Polyester staple Fiber is going to be the fiber of the future in the entire textile industry.

International chains like IKEA etc are now pushing its suppliers to use recycled PSF for its products

In Pakistan rPSF is relatively new product

rPSF is priced at 75% of PSF price

rPSF is used in both in woven and nonwoven

## Recycled Fibre and installed capacity

Khalis Fibre was pioneer of recycled Fibres in Pakistan

E-Vision incorporated in 2014  
Pakistan's rPSF market dominated by 5 players

Total PET Bottles in Pakistan in FY18 : 4,107mln

PET bottles can cater total market of ~410tpd

Plant	Capacity (tpd)
E-Vision	60
Lasani	60
Pinnacle Fibre	50
Khalis Fibre	45
Sun Fibre	30
<b>Total</b>	<b>245</b>

<b>Analysts</b>	<b>Zoya Aqib</b> <i>Associate Analyst</i> Zoya.aqib@pacra.com	<b>Muhammad Hassan</b> <i>Supervisory Senior</i> Muhammad.hassan@pacra.com
<b>Contact Number: +92 42 3586 9504</b>		

# DISCLAIMER

PACRA has used due care in preparation of this document. Our information has been obtained from sources we consider to be reliable but its accuracy or completeness is not guaranteed. The information in this document may be copied or otherwise reproduced, in whole or in part, provided the source is duly acknowledged. The presentation should not be relied upon as professional advice.